

Published by Hutchison 3G Ireland Limited. All rights in this publication are reserved and no part may be reproduced without the prior written permission of the publisher. © 2006 Hutchison 3G Ireland Limited.

A Hutchison Whampoa company.

Hutchison 3G Ireland Limited trading as 3 is a service provider and has provided the information in this user guide concerning what you might expect from 3 services. LG Electronics is the manufacturer of the LG U8360 handset and has provided the information on its features and use set out in this user guide.

The contents are believed to be correct at the time of going to press, but any information, products or services mentioned may be modified, supplemented or withdrawn. The provision of any products and services by Hutchison 3G Ireland Limited is subject to 3's customer terms (available at [three.ie](http://three.ie)).

The customer terms will take precedence if there is any discrepancy with this publication.

3 and related images, logos and names referred to in this publication are trademarks of the Hutchison Whampoa group of companies.

This publication is printed on fully recyclable paper. DM06109 Feb06



Get going.



Find out what your LG U8360 does.



Insert your USIM and battery	2
What you can do on Planet 3	3
Handy information about your mobile	4
Get the most from your mobile	5
Call and video call	6
Use camera, video and audio	7
Set up your email	8
Text, multimedia and email message	9
Transfer files between your mobile and PC	10
Health and safety information	12
Helpful information	16

The sections in green describe 3 services, and those in black describe LG services

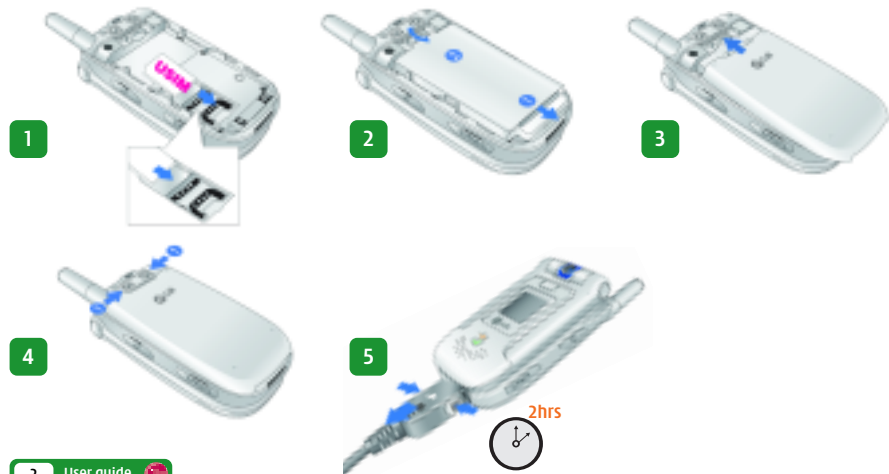
# Insert your USIM and battery

Your 3 USIM can only be used in mobiles which are enabled for 3 services.

If you try to use the USIM in other mobiles, you might seriously damage the mobile. You might not be able to make any calls, including emergency ones either. If you try this, we can't be held responsible for any damage or problems you then have.

## Illustrations

- 1 Inserting your USIM
- 2 Inserting your battery
- 3 4 Closing the battery cover
- 5 Charging your battery



# Find out what you can do on Planet 3

## From you can...

Watch music videos and goals, play games and much more.

Press once and wait for a few seconds for **Planet 3**. It's free to browse. We'll tell how much things cost before you download them.



### Music

Download full length music videos and tracks.



### Tunes & Pix

Personalise your mobile to look and sound unlike anyone else's.




### Games

Buy a game and keep it forever or rent one and pay less.



### Football

Get the latest news, match reports, live scores and video clips.

All this plus news, showbiz, movie trailers, TV clips, comedy and more through the 



# Handy information about your mobile



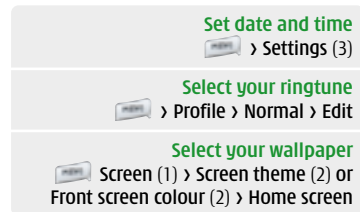
## Icons on the top of the screen

- 3 video service area**  
 voice & picture service area no signal
- Alert profile selected** - in this case silent
- Roaming**
- Alarm set**
- Multimedia messages**
- Text message**
- Battery strength**

## Your mobile's main parts



# Get the most from your mobile



## Set date and time

Press > Settings (3)

## Select your ringtone

Press > Profile > Normal > Edit

## Select your wallpaper

Press Screen (1) > Screen theme (2) or Front screen colour (2) > Home screen

## Select alert profile

Press .

Press and hold to put on Vibrate only

## Make a video call

Enter the number and press . You'll see two live images: the other person and you.

## Take a picture or video

Press small side button. Press to take. Press to switch between camera and video.

## Access Voicemail and Videomail

Press and hold for Voicemail. Press and hold for Videomail. You can access from abroad by calling +353 83 3333 171



## Send and receive email

First, you have to set up your email account - see page 8.

## Send text, photo, video, email

Press for Messages menu. Press and hold to compose a message.

To switch between T9 predictive text, lower case and CAPS press . To switch to / from numbers press and hold .

## Access 'soft boxes'

Press left or right 'soft key' once.

## Clear character / turn on speaker

Press to clear / press and hold during a voice call for loud speaker.

## Turn mobile on / off or end a call

## Add, find or edit a contact

Press to find a contact. Select Options to add or edit contacts.

## Watch music videos, goals, play games and much more

Press and wait a few seconds for 'Planet 3'. It's free to browse. We'll tell how much things cost before you download them.




## Navigate

Navigate left, right, up, down. Press to confirm.





# Call and video call

## Make calls

- › Enter the number
- › Press  for voice calls
- › Press  for video calls
- › End a call press 



## Receive calls

- › To answer a call press 
- › To end or reject a video call press 
- › During a video call, you'll see a large picture of the other person and a small picture of how you look to them in the bottom right of the screen.



- › To stop the other person from seeing you, select **Options** and scroll to **Private mode**.
- › To hide the picture of you on your mobile, select **Options** and scroll to **Hide my picture**.

## Set up Voicemail and Videomail

- › To set up Voicemail: press and hold   
Follow the voice prompts to choose a PIN and record your greeting.
- › To set up Videomail: press and hold   
Follow the voice prompts to record your video greeting. The caller will see your video greeting when you can't answer a video call.

### From you can...

View missed, received, dialled calls

Calling (#) › Call history (2)

Activate call waiting

Calling (#) › Settings (9) › Call waiting (8)

Divert calls

Calling (#) › Call divert (5)

Send or withhold number

Calling (#) › Settings (9) › Send my number (2)

View own number

Contacts (8) › Own number (6)

Copy contacts between USIM and mobile




Contacts (8) › Settings (7) › Copy all (3)

View contacts on USIM or mobile

Contacts (8) › Settings (7)

# Use camera, video and audio

## Take and send photos and video clips

- › To take a photo or video press the small button on the left side of your mobile.
- › Press  to select **Camera** or **Video camera**.
- › Press  to take a photo or to start and stop video recording. Press  again to save the video.
- › Select **Send** (right 'soft key') and follow menu.  
You can control light, brightness, quality, file size and duration. In **Camera** or **Video camera** mode select **Options** (left 'soft key').



### Zoom

normal (1x) or double (2x)

### Brightness

from very bright to very dark

### Quality


from low to high

### Size


six sizes to choose from

### Light

controls the mobile's light

You can associate a photo with a contact stored on the mobile. Highlight the contact, select **Options** (left 'soft key') then select **Edit** (5). Scroll to **Image** and press , then follow menu.

## View and send photos or video clips


- › Select **My Stuff** (left 'soft key'), select **Images** or **Videos** then the photo or video. Alternatively, in **Camera** or **Video camera** mode press the right 'soft key', then  to view the photo or video.
- › Select **Send** (right 'soft key') and follow menu.

## Record, play and send an audio file

From  › Multimedia (7) › 

- › Record: **Voice recorder** (3)

### From My stuff › Sounds (3)

- › Play an audio file: **Voice recorder** › preferred file › 
- › Send an audio file: **Voice recorder** › preferred file › **Send**

## Select an audio file as a ringtone

- › **My stuff** › **Sounds** (3) › preferred folder › preferred file › **Options** › **Sound theme** (4)



# Set up your email

## Set up your username

To set up your **3mail** you need to have set up a Voicemail PIN first.

- › Press and select **Go to Services**. Scroll to and press .
- › Scroll to **Enter username** and press for the text prompt. Key in your preferred username (eg johnsmith), scroll down to **Done** and press . Then press .
- › If this name has already been taken you will be asked to choose again. Once your username has been accepted your email address will appear, eg johnsmith@3mail.com

## Set up your profile

- › Press , scroll to **Settings** (8) and press . Scroll to **Email** (3) and press . Select **Edit** (right 'soft key').
- › At **Username** key in your mobile number - start with 353 XX XXXX XXX but without the (+). Scroll down to **Password** and key in the 4-digit PIN you selected for Voicemail. Scroll down to **Email address** and key in your email address (eg johnsmith@3mail.com). Press **Done** to confirm details.

You're now ready to send and receive emails from your **3mail** account.

## Collect emails from other accounts

To collect emails from other accounts you need to set up your POP3 email account.

- › Press and select **Go to Services**. Scroll to and press . Scroll to **Mail** and press . Scroll to **Settings** and press . Scroll to **Manage other mail** and press . At **Add new account** press .
- › Scroll to **Name this account**, click for the text prompt and enter a name for the account. Then do the same in turn for **POP3 server address**, **POP3 Username**, and **POP3 user password** and select **Done** and press .

You can check these details with your email / internet service provider.

You're now ready to collect emails from another email account.

### Help with entering text

- › To switch between lower case, upper case and predictive text press .
- › To switch to and from numbers press and hold .

# Text, multimedia and email message

- › Press for 5 seconds then press to select text, multimedia or email.
- › To browse into mail press and select **Go to Services**. Scroll to and press .

From the browser you can send emails and view and manage emails, voicemails, faxmails and contacts.

## Send a text or multimedia message

- › To send a text: enter phone number next to **To**. Then scroll to **Message box**. Write the message and press **Send** (right 'soft key').
- › To send a multimedia message to a mobile or email address enter phone number or email address next to **To**. Scroll to message box and press **Options** (left 'soft key') then select **Insert**. Scroll to **Image** or **Video** or **Sound**. Press and select your preferred photo, audio or video clip. Press **Send** (right 'soft key').

## Send an email

- › To send an email you first need to set up email on your mobile - see page 7.
- › To send an email enter email address next to **To**. Then scroll to message box. Write your message and press **Send** (right 'soft key').
- › To retrieve an email press , scroll to **Mailbox** (3). At **3mail** press , then select **Synch** (right 'soft key').
- › To reply to an email select **Options** (left 'soft key') and at **Reply** .

### Help with entering text

- › To switch between lower case, upper case and predictive text press .
- › To switch to and from numbers press and hold .
- › To insert a template, emoticon or contact number select **Options** (left 'soft key').
- › To insert a symbol press .
- › To insert a space press .

# Transfer files between your mobile and PC

Install the software before you attach your mobile to your PC. You'll need: Windows 2000 Professional or Windows XP Home or Professional; a Pentium II 233MHz (or compatible CPU); at least 128MB of RAM and 20MB of hard disk space; a USB port and CD-ROM drive.

## Install the file transfer software

- › Close down any open applications on your PC and load the CD that came with your mobile. The installation should begin automatically, otherwise click on **My Computer** and then on the **LG Installer**. Click on **Install PC Sync** and **Phone Manager**, and follow the Wizard to install.



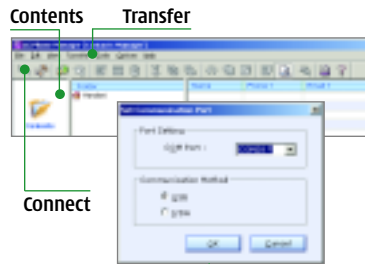
To install **PC Sync** and **Phone Manager**

## Install mobile drivers

- › Attach your mobile to your PC with the USB cable provided. When the **Found new hardware** menu pops up follow the Wizard to install the drivers. It will get you to do this four times to install all drivers.

## Make the connection

- › Click the **LG Phone Manager** icon on your PC desktop and then click **Contents**. Click **Transfer** in the top menu bar and select **Set COM Port**. Make sure **USB** is selected in Communication Method and then click **OK**. Click on **Connect** in the top left corner and **Connected** will appear on your mobile.



Make sure **USB** is selected in **Communication Method**

# Transfer files between your mobile and PC

## Transfer files

- › Click on **Contents** and then drag and drop files between your mobile and PC into the relevant folders.

In some cases you'll need to convert files, for example, to view a video on your PC in Windows Media Player that you captured on your mobile, or to listen to an audio file that you transferred to your mobile. You'll find a number of converters to download in the **Existing customer** section of **three.ie**

Please note that transferring copyright-protected content, eg music and football videos, without the copyright owner's consent is against the law and it breaks your agreement with 3.

## Transfer contacts

- › Click on **Contacts**. To import contacts from your mobile click on **Import** and to export contacts from your mobile click on **Export**.



**Import** **Export**

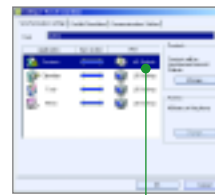
## Synchronise contacts and calendar

- › With your mobile attached but not connected, right click on the **Sync Manager** icon in the bottom right system tray of your PC and select **Synchronise**. Then follow the instructions.



Right click on the **Sync Manager** and select **Synchronise**

- › To synchronise your mobile with MS Outlook, right click on the **Sync Manager** icon in the bottom right system tray of your PC and select **Configure**. Click **Contacts** or **Calendar**, click **Change** then select **MS Outlook** from the **PIM** drop down menu. Click **OK** and **OK** again.



Configure **MS Outlook**

# Health and safety information from the manufacturer

## Safety precautions

- › Do not allow battery to come into direct contact with an electric outlet or car cigarette lighter socket.
- › Do not pierce battery with sharp objects.
- › Do not drop or subject the mobile to physical shock.
- › When the battery has reached the end of its life, dispose of it in accordance with environmental regulations. Do not dispose of your battery in household rubbish.
- › Do not immerse in water.
- › Do not disassemble or modify the battery.
- › Stop using the battery if abnormal heat, odour, discolouration, deformation or abnormal conditions are detected during use, charge or storage.
- › Do not use damaged or deformed batteries. In the unlikely event of a battery leak, take care to keep the battery discharge away from your eyes or skin.
- › If the leakage does come into contact with the eyes or skin, please wash thoroughly in clean water and consult a doctor.
- › The earpiece may become warm during normal use. The handset itself may become warm while the battery is being charged.
- › Use a damp or anti-static cloth to clean the handset. Do not use a dry cloth or electrostatically charged cloth. Do not use chemical or abrasive cleaners as these could damage the mobile.
- › Retain the cardboard packing supplied with this handset. It should be used if the mobile has to be returned for service. This packaging can be recycled when no longer required.
- › Remember to make back-up copies of all important data on your handset.

# Health and safety information from the manufacturer

## Aircraft safety

- › In accordance with CAA regulations, you must switch off your mobile on aircraft. Mobile phone signals can interfere with aircraft equipment. Follow the instructions given by airline staff at all times.

## Hospital safety

- › Switch off your mobile in areas where the use of a handset is prohibited. Follow the instructions given by the respective medical facility regarding the use of handsets on their premises.

## General safety

- › Observe 'Turn off 2-way radio' signs, such as those near petrol stations, chemicals or explosives, and turn off your handset.
- › Do not allow children to play with the handset, charger or batteries.
- › Do not use the handset where blasting is in progress.
- › The operation of some medical electronic devices, such as hearing aids and pacemakers, may be affected if a handset is used next to them. Observe any warning signs and the manufacturer's recommendations.

## Road safety

- › You MUST exercise the proper control of your vehicle at all times. Give your full attention to driving.
- › Observe all laws in respect to the use of handsets when driving.
- › Pull off the road and park before making or answering a call where it is safe to do so. UK law prohibits the use of a handset when driving.
- › You MUST NOT stop on the hard shoulder of a motorway to answer or make a call, except in an emergency.
- › Switch off your handset at refuelling points and petrol stations, even if you are not refuelling your own car.
- › Do not store or carry flammable or explosive materials near your handset.
- › Electronic vehicle systems, such as anti-lock brakes, speed control and fuel injection systems are not normally affected by radio transmissions.
- › The manufacturers of such equipment can advise if it is adequately shielded from radio transmissions. Consult your dealer and do not switch on a handset until it has been checked by qualified installers.





## Health and safety information from the manufacturer

### Vehicles equipped with an air bag

- › An air bag inflates with great force. Do not place objects, including either installed or portable wireless equipment, in the area over the air bag or in the air bag deployment area. If in-vehicle wireless equipment is improperly installed and the air bag inflates, serious injury could result.

### Third party equipment

- › The use of third party equipment, cables or accessories, not made or authorised by LG, may invalidate the warranty of your handset and also adversely affect the handset's safety or operation.

### Service

- › The handset, batteries and charger contain no user-serviceable parts. LG recommend that your LG U8360 handset is serviced or repaired by an LG authorised service centre.

### Efficient use

- › The handset has an antenna. For optimum performance with minimum power consumption, please do not cover the antenna area with your hand. Covering the antenna affects call quality and may cause the handset to operate at a higher power level than required. This decreases talk and standby time.

### Radio frequency energy

- › Your handset is a low-power radio transmitter and receiver. When it is turned on, it receives and transmits radio frequency (RF) energy (radio waves). The system that handles the call (the network) controls the power level at which the handset transmits.

## Health and safety information from the manufacturer

### Exposure to radio frequency energy

Radio wave exposure and Specific Absorption Rate (SAR) information:

- › This handset model LG U8360 has been designed to comply with safety requirements for exposure to radio waves. The requirement is based on scientific guidelines that include safety margins designed to assure the safety of all persons, regardless of age and health.

The radio wave exposure guidelines employ a unit of measurement known as the Specific Absorption Rate, or SAR. Tests for SAR are conducted using a standardised method with the mobile transmitting at its highest certified power level in all used frequency bands.

While there may be differences between the SAR levels of various LG handset models, they are all designed to meet the relevant guidelines for exposure to radio waves.

The SAR limit recommended by the International Commission on Non-Ionising Radiation Protection (ICNIRP), is 2W/kg averaged over ten (10) grams of tissue.

The highest SAR value for this model mobile tested by SASY3 for use at the ear is 0.904 W/KG (10g).

The SAR limit recommended by the Institute of Electrical and Electronics Engineers (IEEE), which is 1.6 W/kg averaged over one (1) grams of tissue (for example USA, Canada, Australia and Taiwan).

# Helpful information

## Find out more about 3's services

- › Visit [three.ie](http://three.ie)
- › Email [customer.services.ie@3mail.com](mailto:customer.services.ie@3mail.com)
- › Call **Customer Services** on 333 (083 3333 333 from another phone).

### Contact Centre

3 Customer Services  
Hutchison 3G Ireland Ltd  
PO Box 333  
Dublin 2  
Ireland

## Useful numbers

	Mobile	Other mobiles
<b>3 customer services</b>	333	083 3333 333
<b>Mail</b> (Voicemail, email & faxmail)	1 (3 secs)	083 3333 171
<b>Videomail</b>	2 (3 secs)	
<b>Directory enquiries</b>	118 11	118 50
<b>International directory enquiries</b>	118 18	118 60
<b>Emergency calls</b>	112	112

## Get the most from your battery

- › You can recharge your battery several hundred times before it will need replacing and you don't need to fully discharge it before recharging.
- › Don't expose the battery charger to direct sunlight or use in areas of high humidity such as a bathroom. Battery life will decrease if you expose it to temperatures below -10 °C or above 45 °C.
- › If you charge your battery regularly and you notice a decrease in talk time or an increase in charging time, then it's probably time to buy a new battery.